



Vasudan Ma'at Class Freighter

SPECS

Class: Medium Ship
 In Service: 2320
 Point Value: 110
 Ramming Factor: 40
 Jump Delay: 25 Turns

MANEUVERING

Turn Cost: 1/4 Speed
 Turn Delay: 1/3 Speed
 Accel/Decel Cost: 1 Thrust
 Pivot Cost: 2+2 Thrust
 Roll Cost: 2+1 Thrust

COMBAT STATS

Fwd/Aft Defense: 12
 Stb/Port Defense: 13
 Engine Efficiency: 3/1
 Extra Power: 0
 Initiative Bonus: +12

Speed	1	2	3	4	5	6	7	8	9	10	11	12
Turn Cost	1	1	1	1	2	2	2	2	3	3	3	3
Turn Delay	1	1	1	2	2	2	3	3	3	4	4	4

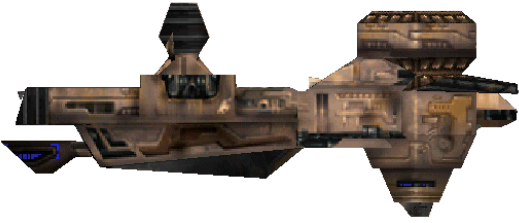
WEAPON DATA

Particle Turret
 Class: Particle
 Mode: Standard
 Range Penalty: -3 per 2 hexes
 Intercept Rating: -2

Dispersed Mode:
 Damage: 6
 Fire Control: +3/+3/+4
 Rate of Fire: 3 per turn

Concentrated Mode:
 Damage: 8
 Fire Control: +3/+2/+0
 Rate of Fire: 2 per turn

Avenger Turret
 Class: Particle
 Mode: Standard
 Damage: 1d6+1
 Range Penalty: -2 per hex
 Fire Control: +2/+2/+2
 Intercept Rating: -2
 (vs Slow Ballistic Only)
 Rate of Fire: 1 per turn



FORWARD HITS

- 1-4: Retro Thrust
- 5-6: C&C
- 7-9: Particle Turret
- 10-17: Structure
- 18-20: PRIMARY Hit

AFT HITS

- 1-5: Main Thrust
- 6-7: Jump Drive
- 8-9: Avenger Turret
- 10-11: Cargo Pod
- 12-17: Structure
- 18-20: PRIMARY Hit

PRIMARY HITS

- 1-6: Port/Stb Thrust
- 7-11: Cargo Pod
- 12-14: Sensors
- 15-17: Engine
- 18-20: Reactor

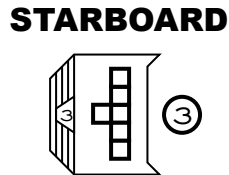
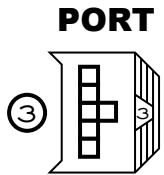
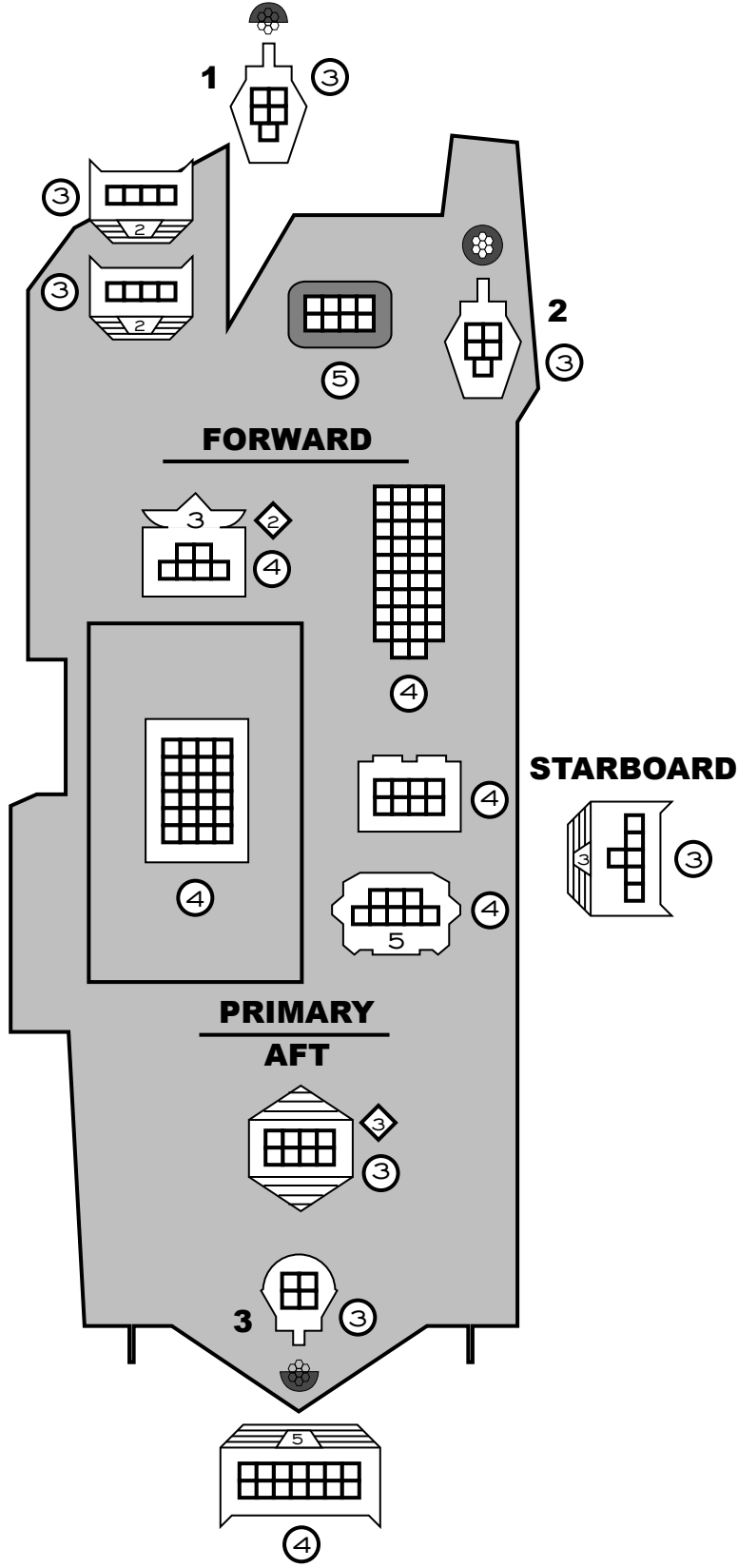
SPECIAL NOTES

Limited Sensors
 Subspace Drive

SENSOR DATA

Defensive EW

Target #1		
Target #2		
Target #3		
Target #4		
Target #5		
Target #6		



ICON RECOGNITION

- Thruster
- C & C
- Sensors
- Engine
- Reactor
- Jump Engine
- Cargo