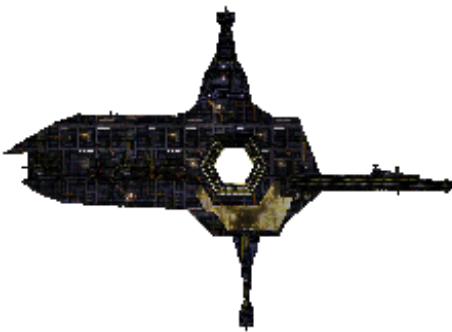




Terran Arcadia Class Installation



SPECS

Class: Capital Base
In Service: 2317
Point Value: 750
Ram Factor: 1000
Jump Delay: N/A

MANEUVERING

Turn Cost: N/A
Turn Delay: N/A
Accel/Decel Cost: N/A
Pivot Cost: N/A
Roll Cost: N/A

COMBAT STATS

Fwd/Aft Defense: 17
Stb/Port Defense: 19
Engine Efficiency: N/A
Extra Power: 0
Initiative Bonus: +0

WEAPON DATA

Particle Turret
Class: Particle
Mode: Standard
Damage: 6
Range Penalty: -3 per 2 hexes
Fire Control: +3/+3/+4
Intercept Rating: -2
Rate of Fire: 3 per turn
Alternate Mode: 8 damage, +3/+2/+0, RoF 2 per turn

Fighter Killer Bank

Class: Ballistic
Mode: Standard
Damage: 10
Launch Range: 10
Range Penalty: n/a
Fire Control: +0/+0/+4
Intercept Rating: N/A
Rate of Fire: 1 per turn

FORWARD HITS

- 1-5: Particle Turret
- 6-7: Fighter Killer Bank
- 8-18: Forward Structure
- 19-20: PRIMARY Hit

SPECIAL NOTES

Limited Sensors
Does not Rotate

SIDE HITS

- 1-2: Particle Turret
- 3-4: Fighter Killer Bank
- 5: CCEW Pod
- 6-9: Docking Port
- 10-18: Port/Sib Structure
- 19-20: PRIMARY Hit

SENSOR DATA

Defensive EW

Target #1		
Target #2		
Target #3		
Target #4		
Target #5		
Target #6		

AFT HITS

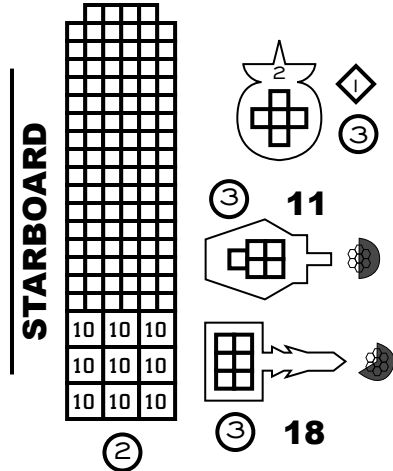
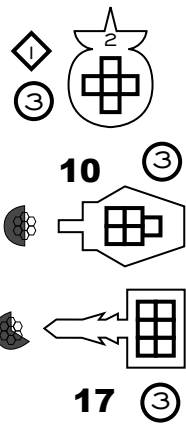
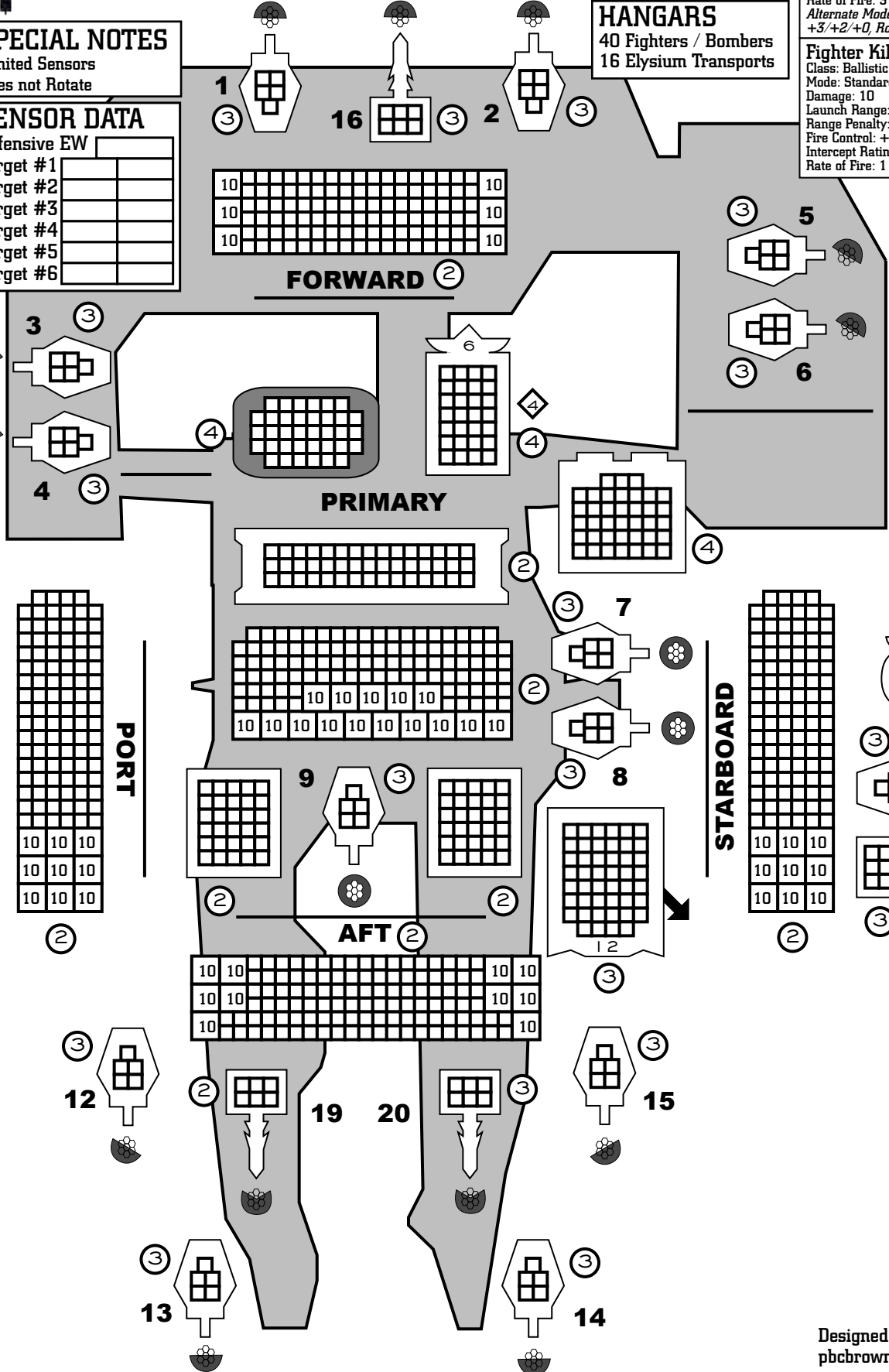
- 1-5: Particle Turret
- 6-7: Fighter Killer
- 8-18: Aft Structure
- 19-20: PRIMARY Hit

PRIMARY HITS

- 1-8: Primary Structure
- 9-10: Particle Turret
- 11-13: Docking Port
- 14-15: Hangar
- 16-17: Cargo
- 18: Sensors
- 19: Reactor
- 20: C&C

HANGARS

40 Fighters / Bombers
16 Elysium Transports



ICON RECOGNITION

- C & C
- Sensors
- Reactor
- Hangar
- CCEW Pod
- Cargo
- Docking Port